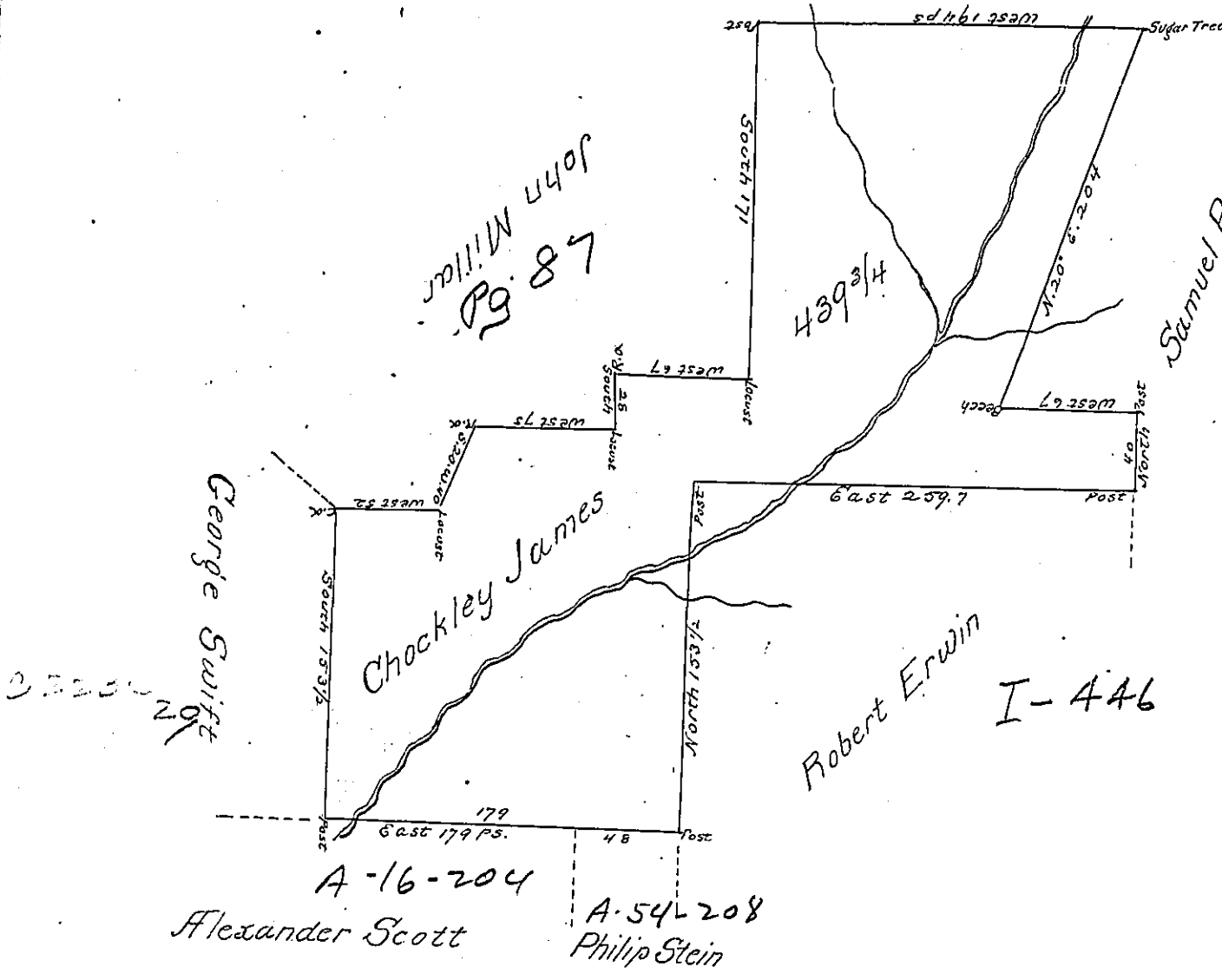


John Proctor
A-14-244

John Miller
Pg. 87

Samuel Postlewait
C173-216



I-446

Situated on both sides of Cobs Creek in Greenfield Township Bedford County containing $439\frac{3}{4}$ acres allowance of six percent for roads &c. Surveyed for Chockley James the 30th day of Aug. 1794 & resurveyed the 30th day of April 1801 on Warrant dated the 10 day of March 1794

William Piper D. S.
To Samuel Cochran Esqr.
Surveyor General

IN TESTIMONY that the above is a copy of the original remaining on file in the Department of Internal Affairs of Pennsylvania, made conformably to an Act of Assembly approved the 16th day of February, 1833, I have hereunto set my Hand and caused the Seal of said Department to be affixed at Harrisburg, this fourth day of June 1901

James W. Latta
Secretary of Internal Affairs.